

Recycling Element



SECTION 15 - RECYCLING ELEMENT

The New Jersey Municipal Land Use Law sets forth regulations providing regulations for the adoption of a master plan by municipal planning boards.

N.J.S. 40:55D-28B (12) indicates the following regarding the required recycling element of the master plan:

A recycling plan element which incorporates the State Recycling Plan goals, including provisions for the collection, disposition and recycling of recyclable materials designated in the municipal recycling ordinance within any development proposal for the construction of 50 or more units of single-family residential housing or 25 or more units of multi-family residential housing and for any commercial or industrial development proposal for the utilization of 1,000 square feet or more of land.

Statewide Recycling Act

In April of 1987, the Senate and General Assembly of the State of New Jersey approved the *New Jersey Statewide Mandatory Source Separation and Recycling Act*, which set forth regulations regarding the recovery of recyclable products statewide. The intention of the Legislature was set forth in section 1 of the Act as follows:

The Legislature finds that removing certain materials from the municipal solid waste stream will decrease the flow of solid waste to sanitary landfill facilities, aid in the conservation and recovery of valuable resources, conserve energy in the manufacturing process, and increase the supply of reusable raw materials for the State's industries; and that the recycling of reusable waste materials will reduce substantially the required capacity of proposed resource recovery facilities and contribute to their overall combustion efficiency, thereby resulting in cost - savings in the planning, construction, and operation of these resource recovery facilities.

The Legislature further finds that the expeditious identification of local, national and international markets and distribution networks for recyclable materials is a necessary prerequisite to the orderly development of mandatory statewide, county and municipal recycling programs; and that the State must institute and complete studies of market stimulation for recyclable materials.

The Legislature further finds that the State may most appropriately demonstrate its long-term commitment to proper solid waste management by establishing a mandatory statewide source separation and recycling program, and by increasing the purchase of recycled paper and paper products by the various agencies and instrumentality's of the State Government.

The Legislature further declares that it is in the public interest to mandate the source separation of marketable waste materials on a Statewide basis so that reusable materials may be returned to the economic mainstream in the form of raw materials or products rather than be disposed of at the State's overburdened landfills, and further declares that the recycling of marketable materials by every municipality in this State, and the development of public and private sector recycling activities on an orderly and incremental basis, will further demonstrate the State's long term commitment to an effective and coherent solid waste management strategy.

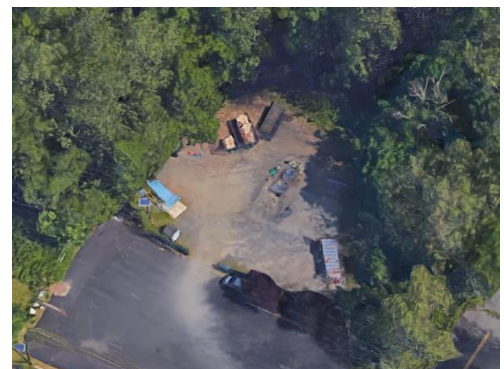
Section 25 of the *New Jersey Statewide Mandatory Source Separation and Recycling Act* supplements N.J.S. 40:55D-2 of the Municipal Land Use Law by adding purpose "o" which states "To promote the maximum practicable recovery and recycling of recyclable materials from municipal solid waste through the use of planning practices designed to incorporate the State Recycling Plan Goals and to complement municipal recycling programs." The State of New Jersey is committed to reducing solid wastes through statewide recycling efforts.

Solid Waste Collection

Solid waste is collected for the Township at curbside twice a week for household refuse, the days of which vary depending upon the street location. The Township provides curbside collection of recyclables as well as a drop off center on Little Falls Road adjacent to Bowden Pond Tennis Courts. Recycling curbside pick up is separated into paper and comingled recycling.

Recycling not only serves to conserve our limited natural resources, but also is instrumental in reducing the excess products entering the waste stream.

Photo 15-1: Cedar Grove Recycling Center



Solid Waste Disposal Procedures

The municipality has restrictions on the collection of municipal waste. There is a ten bag limit for household garbage. As per New Jersey State Law, no televisions are allowed in the solid waste stream. The following items must be separated and disposed of at the residents expense:

- Construction Debris
- Concrete Material
- Demolition Material
- Hazardous Material
- Industrial Byproduct
- Roofing Material.

Recycling Procedures

The Township provides two yellow recycling containers per residential and business address free-of-charge. As per New Jersey State Law and Chapter 146 of the Code of the Township of Cedar Grove, recycling is MANDATORY for all residents and businesses. It is the responsibility of the resident to recycle according to the guidelines. Recyclables are to be placed in the correct container and at curbside the evening before the day of collection. Recycling should not be placed next to trees, telephone poles, parked cars or other obstructions. Recyclables may not be placed in plastic bags and may not be placed in the street.

Disposal of Tree Branches

Tree branches must be cut in four foot lengths and tied in bundles fifty pounds or less for collection on your vegetative waste/recycling collection day.

Leaf Collection

Residents may rake leaves to the curb and piled in gutter for collection by municipality's leaf vacuum and leaf loader. The program also includes a paper leaf bag collection service every Monday, Tuesday and Wednesday (recycling days). Leaf bags must contain leaves only – no grass, branches, stones, debris, etc. The collection schedule provides for the collection of leaves piled at the curb line using an approximate 7-10 day cycle, depending upon the volume of leaves on the individual streets, weather conditions and equipment maintenance. Leaves cannot be piled on Pompton Ave. Piles of leaves must not be placed in the roadway in such a manner as to cause pedestrian or vehicular safety hazards.

Leaf piles must not include debris such as branches, grass, stones, wood, trash, etc. which may damage the municipality's collection equipment. Also, leaves must not be piled near or upon drainage catch basins or around fire hydrants, or within 10 feet of street intersections. Residents are cautioned not to park a vehicle over leaf piles.

Only biodegradable paper leaf bags will be accepted, no plastic bags. Leaves placed in plastic bags will not be collected. Biodegradable paper leaf bags must be placed at the curb of any public road the night before your scheduled pick- up day. Bags will be picked up according to zone each week during the leaf collection period, and follows the recycling schedule. Leaves collected by the municipality are transported to a leaf transfer site where the leaves are stockpiled and transported to an approved leaf composting facility.

Christmas Tree Recycling

After Christmas the Parks Department picks up the discarded Christmas trees throughout the Township. The Christmas tree pickup starts immediately after January 1 and continues for approximately four weeks. Trees in plastic bags will not be picked up.

Batteries

Alkaline batteries are no longer considered hazardous waste and can be disposed with your regular garbage!

NiCd/Rechargeable batteries ranging from the small 1.5V AAA batteries, to cell phone, laptop and power tool batteries can be disposed of at one of the Counties Household Hazardous Waste Collection Days.

Table 15-1:
Recycled Materials 2010 through 2017

Material	2010	2011	2012	2013	2014	2015	2016	2017
Corrugated	758.72	613.79	345.00	747.16	743.66	1,329.51	470.70	801.93
Mixed Office Paper	6.62	0.30	-	55.50	62.80	245.67	3.66	74.54
Newspaper	922.09	716.50	613.11	164.94	188.40	239.89	982.09	192.13
Other Paper/Mag/JunkMail	54.40	11.72	1.44	137.44	157.00	782.93	7.69	192.13
Glass Containers	517.53	316.43	297.90	247.27	344.96	393.71	365.56	423.58
Aluminum Containers	24.17	22.55	25.24	17.65	25.01	62.02	26.12	69.45
Steel Containers	58.31	47.07	42.70	35.33	49.03	62.02	52.22	50.14
Plastic Containers	195.38	67.62	77.05	52.98	73.30	110.43	78.34	127.63
Heavy Iron	2,285.15	1,960.89	480.56	209.25	110.51	293.42	1,508.41	1,563.99
NonFerrous/Aluminum Scrap	7,369.36	894.09	3.99	5.00	25.61	28.73	8,141.53	108.68
White Goods & Light Iron	384.13	6.19	391.02	422.51	303.85	228.41	706.73	207.59
Anti-freeze	0.65	2.74	0.38	0.03	10.35	0.23	-	0.37
Batteries (Automobile)	0.79	0.61	0.42	1.53	1.45	1.74	-	0.57
Automobile Scrap	370.31	419.19	-	144.35	61.51	86.58	310.47	77.39
Tires	0.80	-	-	1.63	-	16.45	0.50	-
Used Motor Oil	3.27	27.55	4.61	1.15	11.23	0.39	-	2.05
Brush/Tree Parts	6.68	1,103.92	748.30	23.75	113.00	550.27	-	152.62
Grass Clippings	0.01	-	-	-	-	-	-	-
Leaves	3,267.40	1,941.00	3,795.00	4,561.00	3,390.00	4,077.00	7,244.00	3,379.57
Stumps	1.20	-	5.50	145.96	17.00	25.00	5.00	-
Consumer Electronics	12.04	18.61	27.15	17.18	19.59	29.35	6.20	32.37
Concrete / Asphalt / Brick / Block	1,355.08	1,691.12	983.63	3,064.97	3,553.92	2,716.84	1,118.00	3,348.37
Food Waste	12.15	10.64	12.28	41.90	12.77	22.19	15.23	2.46
Other Material Not Listed	1.09	1.05	10.96	1.69	2.16	42.89	46.44	-
Other Glass	-	0.21	0.96	-	-	-	-	-
Other Plastic	-	4.19	0.32	0.03	0.03	0.01	1.44	-
Oil Contaminated Soil	1,122.16	761.35	14.06	1,908.20	1,366.36	1,767.62	75.65	1,914.23
Process Residue	-	12.29	-	-	-	-	-	-
Textiles	-	-	-	-	-	-	-	-
Wood Scraps	25.58	46.57	11.73	4.27	-	9.12	65.80	0.25
Total	18,755.07	10,698.19	7,893.31	12,012.67	10,643.50	13,122.42	21,231.78	12,722.04

Chart 15-1 : Township of Cedar Grove:
Recycling Tonnage from 2010 through 2017

