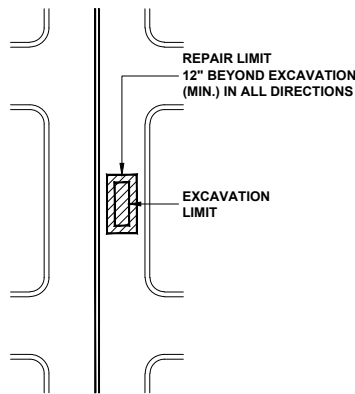


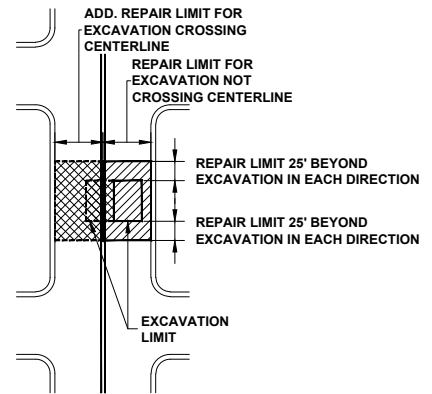
**EXCAVATION BACKFILL AND
PAVEMENT REPAIR**

N.T.S.



**REPAIR LIMIT, EXCAVATION AREA
LESS THAN 50 SQUARE FEET**

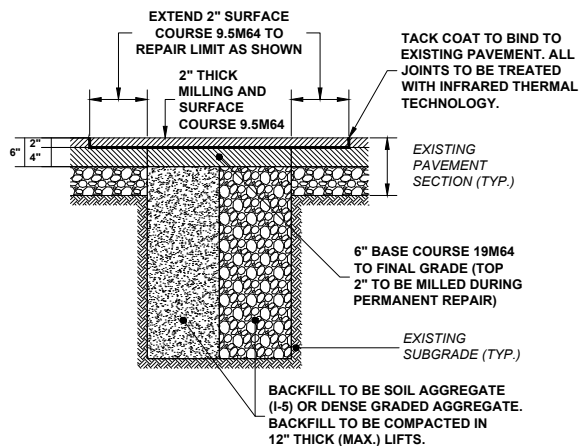
N.T.S.



**REPAIR LIMIT, EXCAVATION AREA
50 SQUARE FEET+**

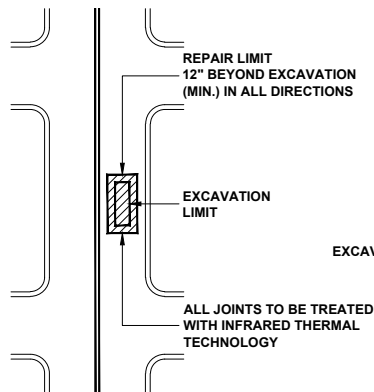
N.T.S.

**ROADS NOT CONSTRUCTED, RECONSTRUCTED, OR OVERLAID
WITHIN FIVE (5) YEARS OF EXCAVATION**



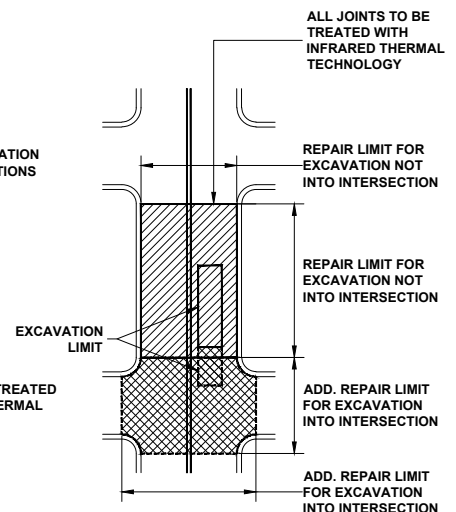
**EXCAVATION BACKFILL AND
PAVEMENT REPAIR**

N.T.S.



**REPAIR LIMIT, EXCAVATION AREA
LESS THAN 50 SQUARE FEET**

N.T.S.



**REPAIR LIMIT, EXCAVATION AREA
50 SQUARE FEET+**

N.T.S.

**ROADS CONSTRUCTED, RECONSTRUCTED, OR OVERLAID
WITHIN FIVE (5) YEARS OF EXCAVATION**

LAST REVISED: OCTOBER 2023

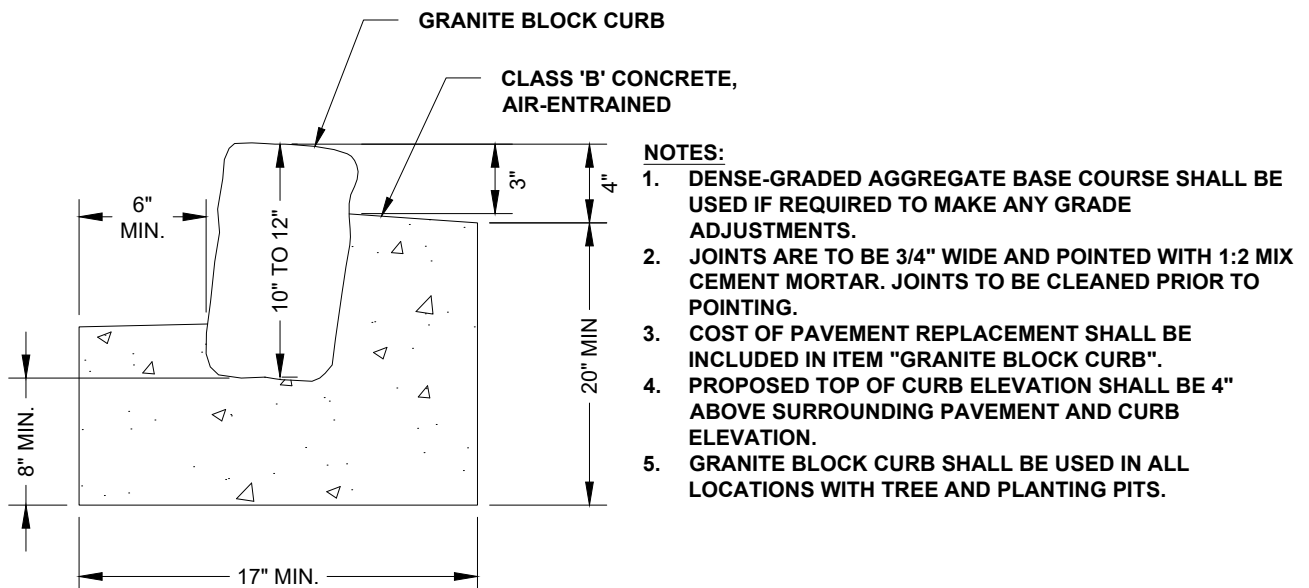
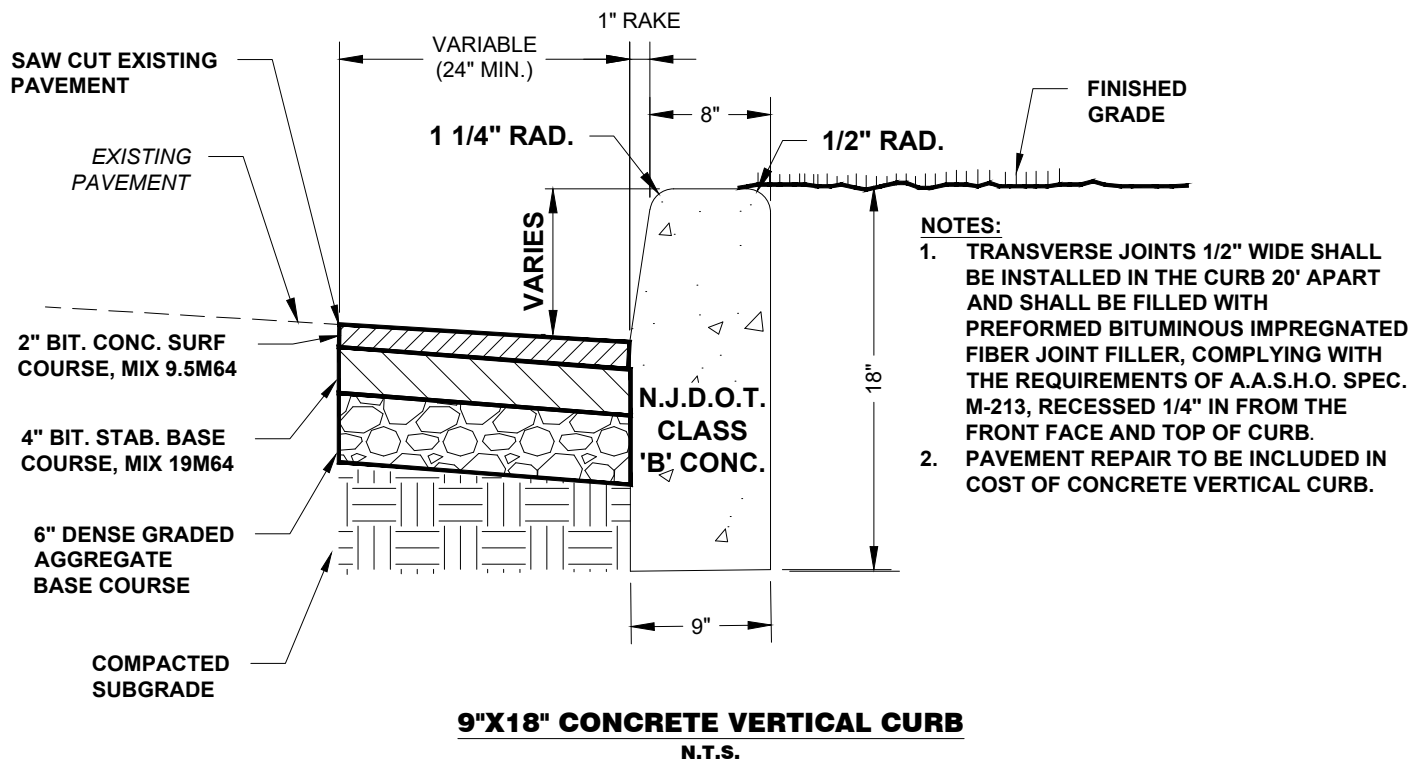
**EXCAVATIONS AND OPENINGS STANDARD DETAILS
FOR PERMANENT REPAIRS TO STREETS**

TOWNSHIP OF CEDAR GROVE

ENGINEERING DEPARTMENT

CEDAR GROVE, NJ 07009 PHONE 973-239-1410 EXT 280





GRANITE BLOCK CURB DETAIL

N.T.S.

LAST REVISED: OCTOBER 2023

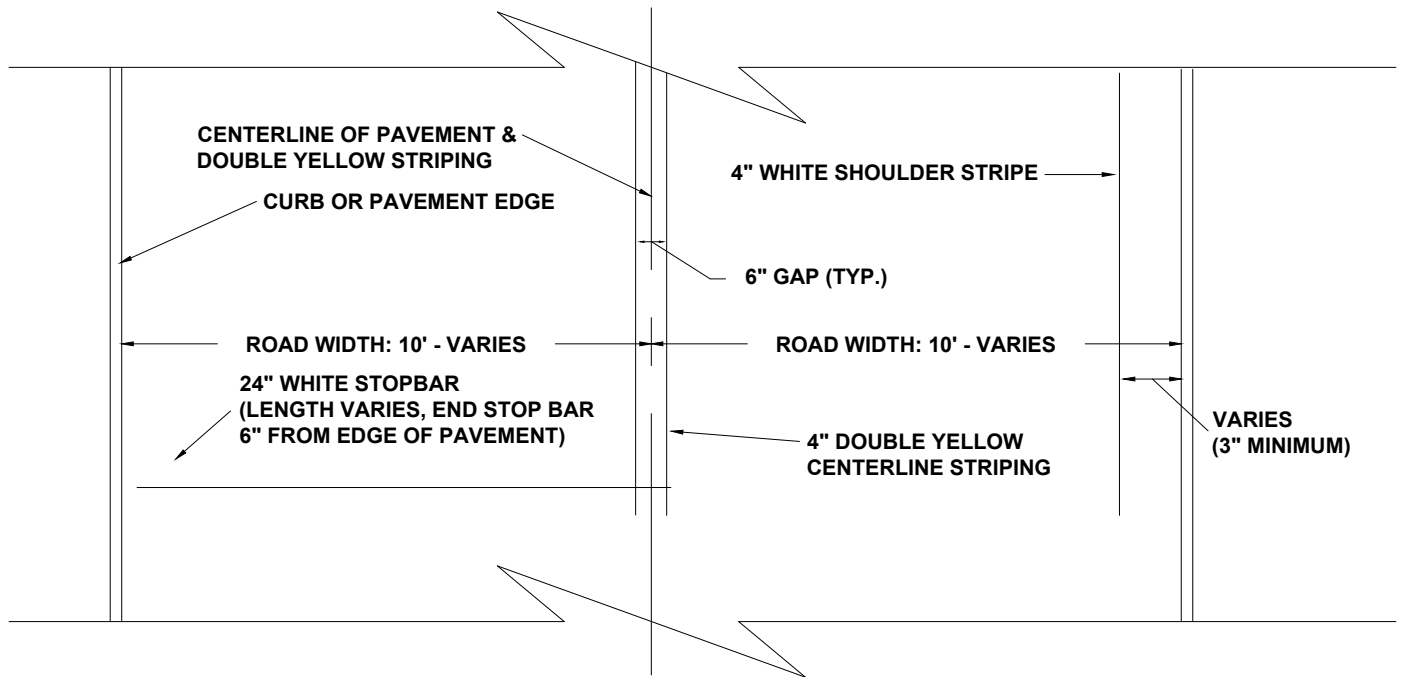
**EXCAVATIONS AND OPENINGS STANDARD DETAILS
FOR PERMANENT REPAIRS TO STREETS**

TOWNSHIP OF CEDAR GROVE

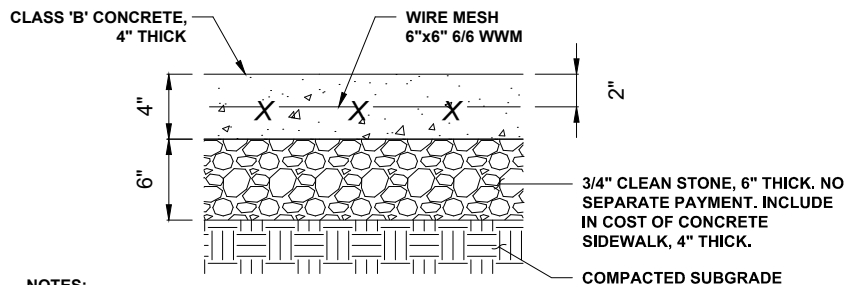
ENGINEERING DEPARTMENT

CEDAR GROVE, NJ 07009 PHONE 973-239-1410 EXT 280





TYPICAL ROADWAY STRIPING DETAIL
N.T.S.



NOTES:

1. SUBBASE SHALL BE COMPACTED TO THE SATISFACTION OF THE ENGINEER.
2. EXPANSION JOINTS OF 1/2" WIDE BITUMINOUS CELLULAR TYPE JOINT FILLER WILL BE PROVIDED EVERY 12' MAX IN BOTH DIRECTIONS.
3. LONGITUDINAL JOINTS, 1/4" WIDE, SHALL BE PROVIDED BETWEEN CURBS AND ABUTTING SIDEWALKS AND SHALL BE FILLED WITH PREMOLDED BITUMINOUS TYPE JOINT FILLER.
4. TRANSVERSE SURFACE GROOVES SHALL BE CUT IN SIDEWALKS BETWEEN EXPANSION JOINTS AT INTERVALS EQUAL TO THE SIDEWALK WIDTH.
5. ALL CONCRETE SHALL BE CLASS 'B' AIR ENTRAINED.
6. ALL JOINTS AND EDGES ARE TO BE TOOLED.
7. SURFACE SHALL BE BRUSHED TRANSVERSELY TO A NEAT FINISH.
8. LIQUID MEMBRANE FORMING CURING COMPOUND SHALL BE APPLIED IN COMPLIANCE WITH N.J.D.O.T. SPECS.
9. SCORING JOINTS WILL BE 10' O.C.

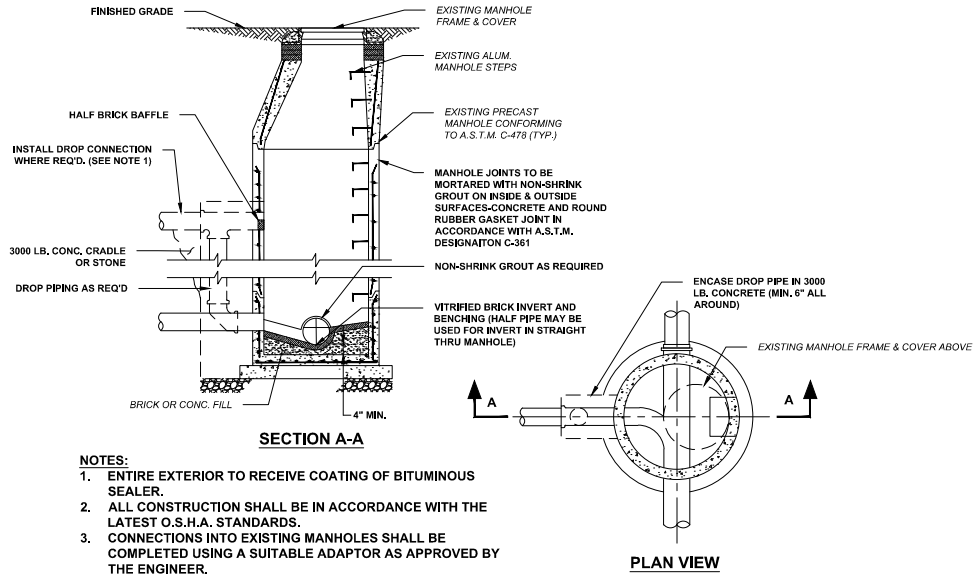
CONCRETE SIDEWALK, 4" THICK
N.T.S.

LAST REVISED: OCTOBER 2023

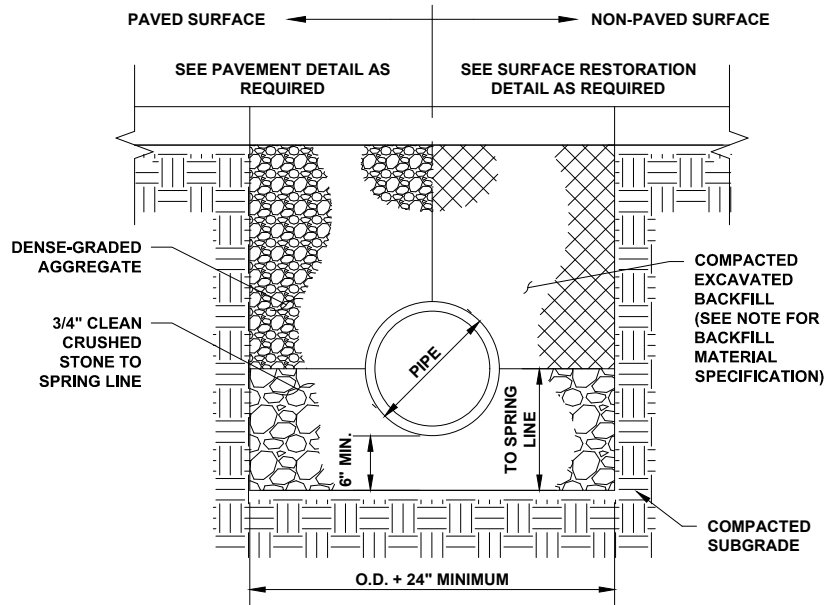
**EXCAVATIONS AND OPENINGS STANDARD DETAILS
FOR PERMANENT REPAIRS TO STREETS**

TOWNSHIP OF CEDAR GROVE
ENGINEERING DEPARTMENT
CEDAR GROVE, NJ 07009 PHONE 973-239-1410 EXT 280





SANITARY DROP MANHOLE N.T.S.



BACKFILL SPECIFICATIONS:

1. SHALL BE FREE OF DEBRIS AND STONES 2" OR GREATER IN ANY DIMENSION.
2. SHALL BE PLACED IN 12" LIFTS AND COMPACTED TO 95% MAXIMUM DENSITY.

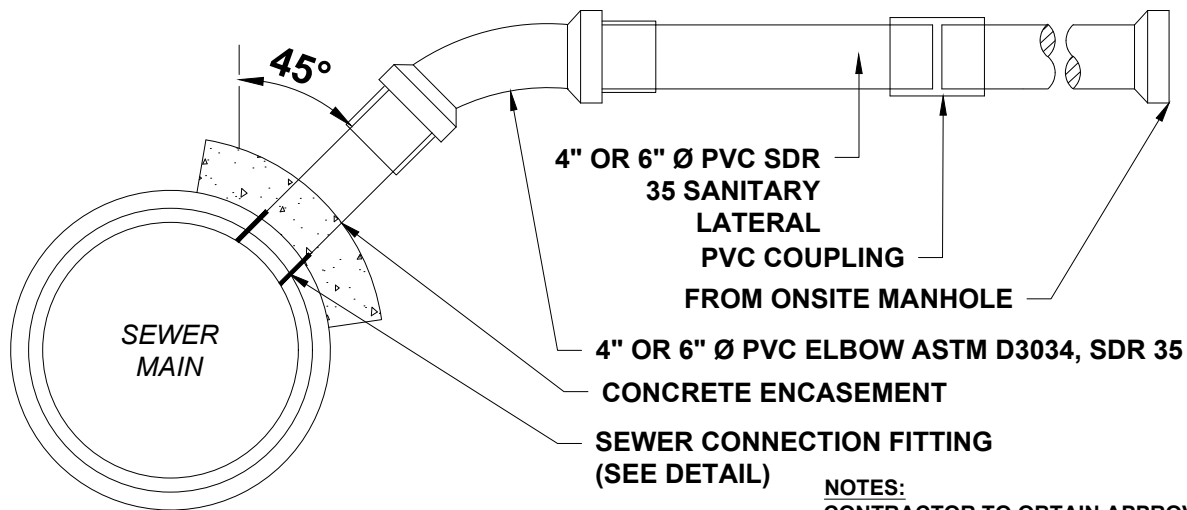
PIPE TRENCH N.T.S.

LAST REVISED: OCTOBER 2023

EXCAVATIONS AND OPENINGS STANDARD DETAILS FOR PERMANENT REPAIRS TO STREETS

TOWNSHIP OF CEDAR GROVE
ENGINEERING DEPARTMENT
CEDAR GROVE, NJ 07009 PHONE 973-239-1410 EXT 280



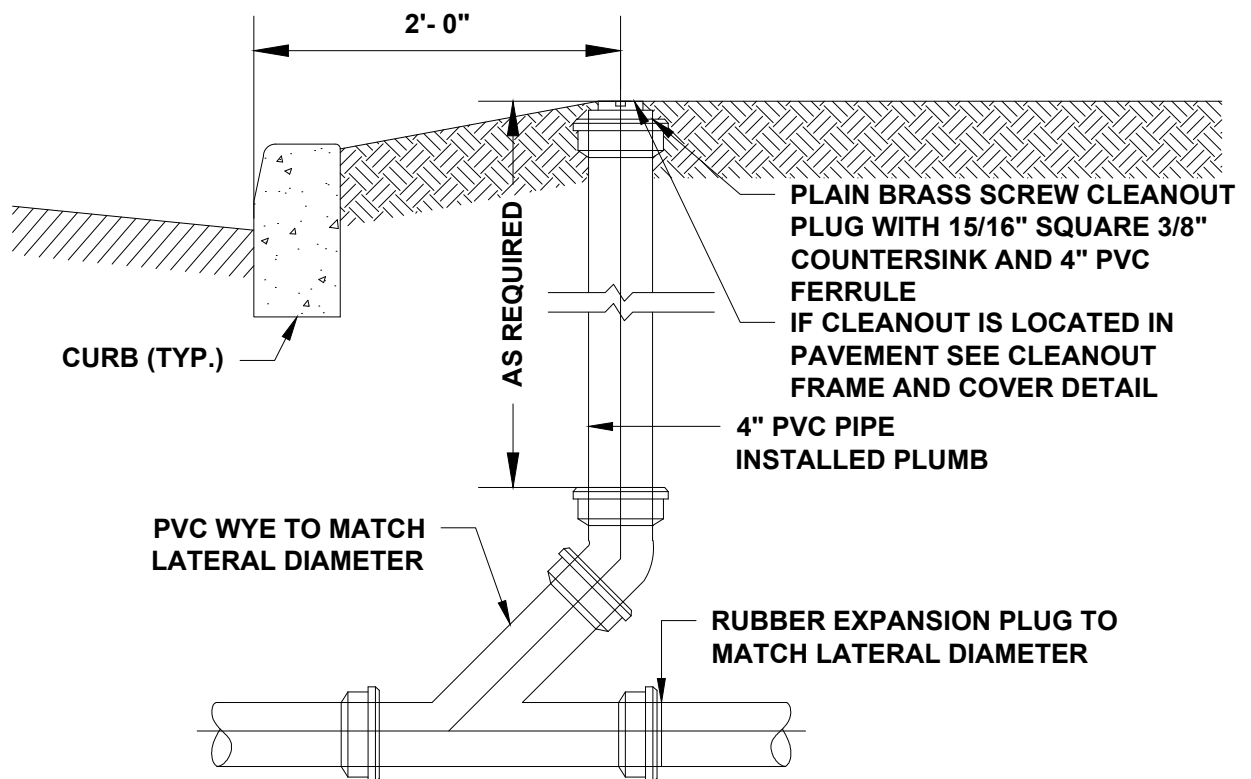


NOTES:

CONTRACTOR TO OBTAIN APPROVAL FROM WATER / SEWER DEPARTMENT PRIOR TO INSTALLATION.

SANITARY SEWER LATERAL CONNECTION

N.T.S.



SANITARY CLEANOUT

N.T.S.

LAST REVISED: OCTOBER 2023

NOTES:

CONTRACTOR TO OBTAIN APPROVAL FROM WATER / SEWER DEPARTMENT PRIOR TO INSTALLATION.

**EXCAVATIONS AND OPENINGS STANDARD DETAILS
FOR PERMANENT REPAIRS TO STREETS**

TOWNSHIP OF CEDAR GROVE

ENGINEERING DEPARTMENT

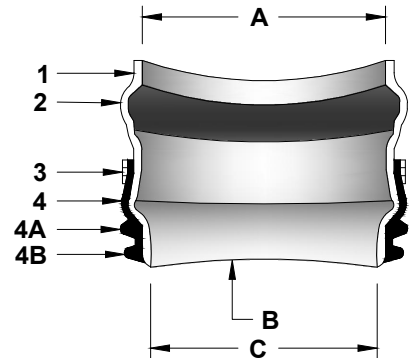
CEDAR GROVE, NJ 07009 PHONE 973-239-1410 EXT 280



EQUIVALENT O.BELL END ACCEPTS PIPE WITH SDR 35, ASTM D3034 OR EQUIVALENT O.D. SPECIFICATION IN 4" OR 6".

A. CURVATURE VARIES WITH MAINLINE DIAMETERS.

B. SPIGOT END PVC SDR 35, ASTM D3034 DIAMETERS: 4" OR 6"



PART	PART NAME	MATERIALS
1	HUB ADAPTOR	PVC SDR 35 ASTM D3034
2	RUBBER GASKET	ASTM F477
3	SECURING CLAMP*	BAND SS #301
4	RUBBER SLEEVE	SCREW SS #305
4A	UPPER SEGMENT**	HOUSING SS #301
4B	LOWER SEGMENT***	ASTM F477

* OPTIONAL: #316 STAINLESS STEEL BAND, SCREW AND HOUSING

** DISTANCE BETWEEN 4A AND 4B WILL VARY BY PRODUCT TYPE

*** WILL NOT APPEAR ON RUBBER SLEEVES FOR CONCRETE OR CLAY PIPE

TEE SIZE	HOLE DIAMETER
4"	4 1/2"
6"	6 1/2"

NOTES:

1. RECOMMENDED METHOD OF CUTTING HOLE IS WITH HOLE SAW FOR PVC AND OTHER PLASTICS, AND DIAMOND BIT FOR CONCRETES, CLAY, FRP AND D.I.
2. USE APPLICABLE FITTING PER EXISTING PIPE MATERIAL.

SEWER CONNECTION FITTING DETAIL

N.T.S.

LAST REVISED: OCTOBER 2023

EXCAVATIONS AND OPENINGS STANDARD DETAILS FOR PERMANENT REPAIRS TO STREETS

TOWNSHIP OF CEDAR GROVE

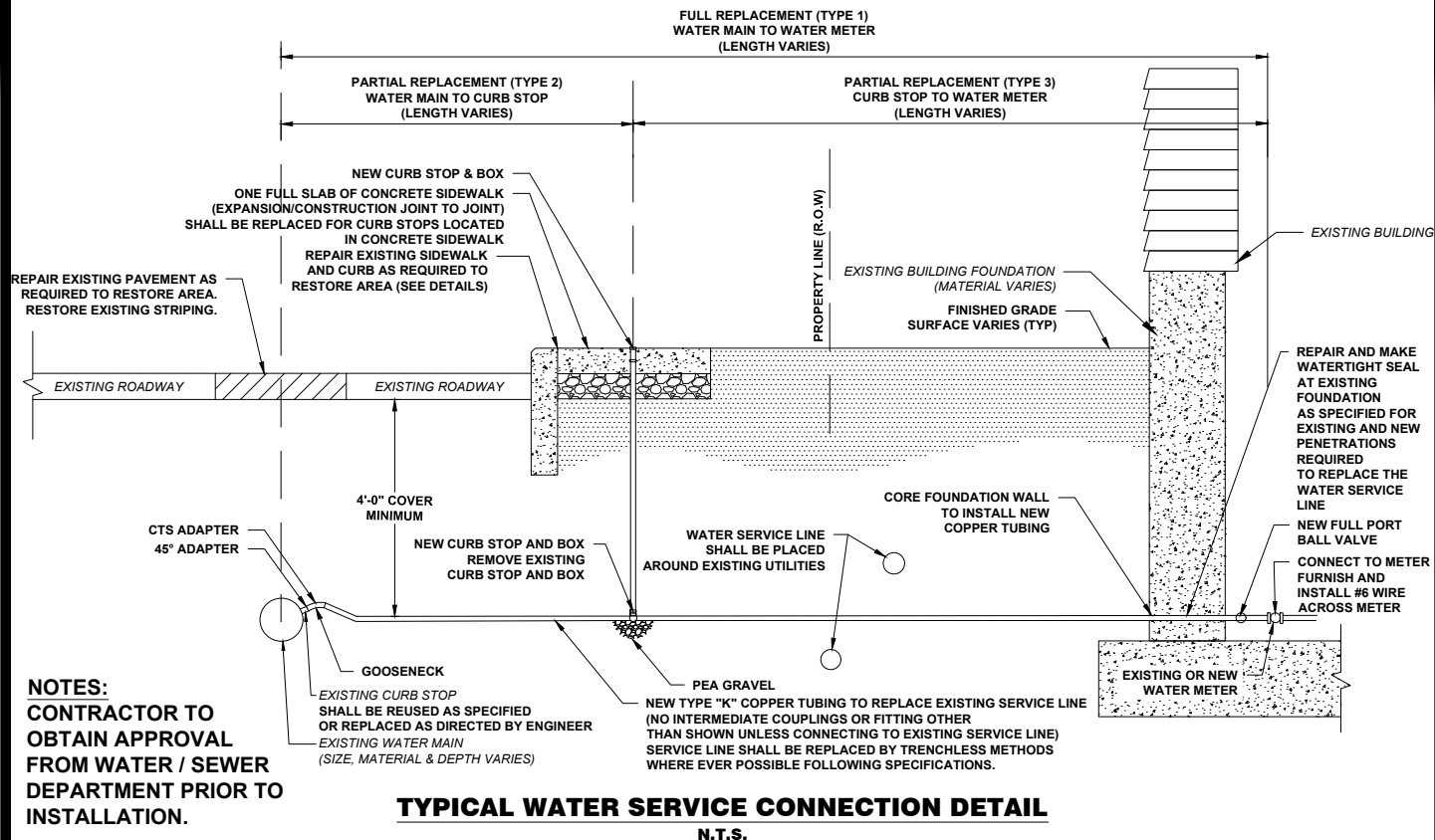
ENGINEERING DEPARTMENT

CEDAR GROVE, NJ 07009 PHONE 973-239-1410 EXT 280

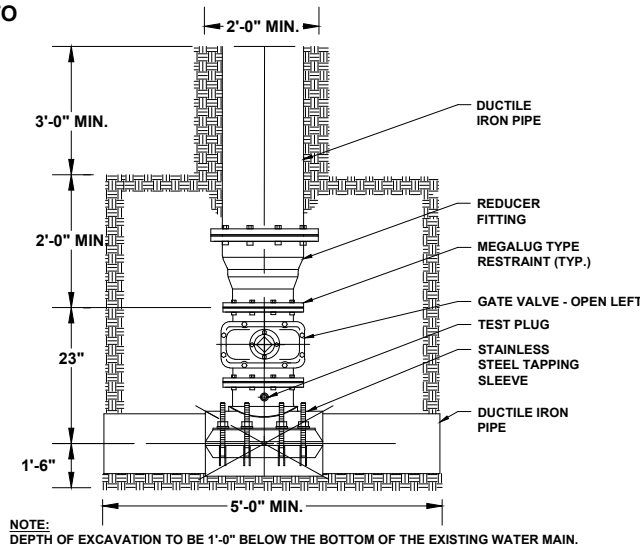


NOTES:

CONTRACTOR TO OBTAIN APPROVAL FROM WATER / SEWER DEPARTMENT PRIOR TO INSTALLATION.



NOTES:
 CONTRACTOR TO OBTAIN APPROVAL FROM WATER / SEWER DEPARTMENT PRIOR TO INSTALLATION.



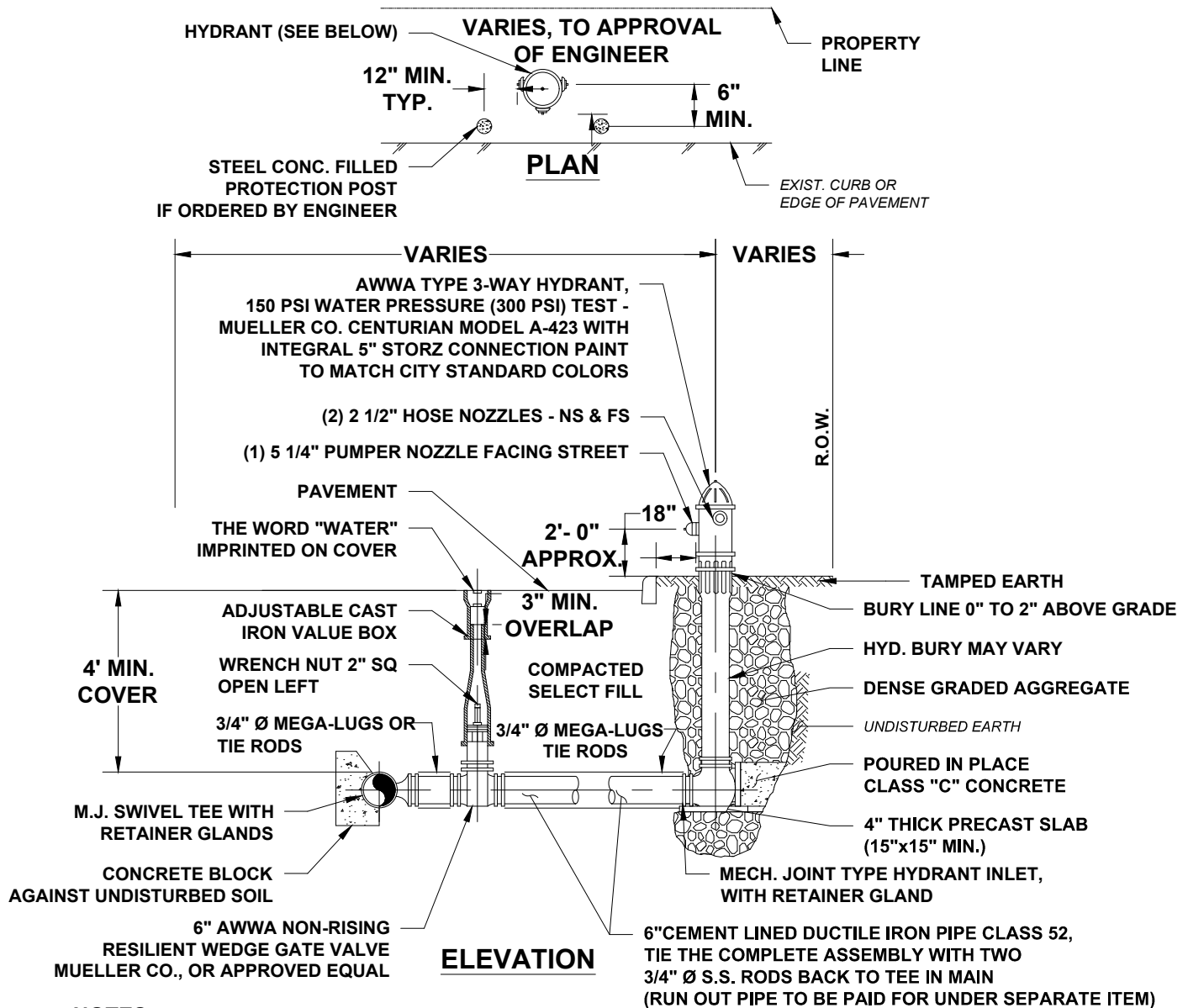
TAPPING SLEEVE AND VALVE DETAIL
 N.T.S.

LAST REVISED: OCTOBER 2023

EXCAVATIONS AND OPENINGS STANDARD DETAILS FOR PERMANENT REPAIRS TO STREETS

TOWNSHIP OF CEDAR GROVE
 ENGINEERING DEPARTMENT
 CEDAR GROVE, NJ 07009 PHONE 973-239-1410 EXT 280





NOTES:

1. DRAIN HOLE TO BE KEPT FREE OF DEBRIS.
2. CONTRACTOR MUST REPLACE/ RESTORE ALL EXISTING DISTURBED SURFACES INCLUDING BUT NOT LIMITED TO PAVEMENT, SIDEWALK, PAVEMENT MARKERS/ STRIPING, LANDSCAPING AND LAWN.
3. CONTRACTOR TO RETURN ALL REMOVED HYDRANT TO OWNER.
4. CONTRACTOR TO REPLACE HYDRANT TAGS.
5. CONTRACTOR TO FURNISH AND INSTALL HYDRANT PER MUNICIPALITY OR OWNER STANDARDS AS DIRECTED.

TYPICAL HYDRANT INSTALLATION DETAIL

N.T.S.

LAST REVISED: OCTOBER 2023

EXCAVATIONS AND OPENINGS STANDARD DETAILS FOR PERMANENT REPAIRS TO STREETS

TOWNSHIP OF CEDAR GROVE

ENGINEERING DEPARTMENT
CEDAR GROVE, NJ 07009 PHONE 973-239-1410 EXT 280

